

Visual Basic Editor (VBE)

Videos 02 to 05

- Developer tab, Code group
- Style guide for writing clean, well-organized code
- VBA's built-in members (VBA library)

Add the Developer tab from File, Options

File | Options | Customize Ribbon | Developer check box

The screenshot displays the Excel Options dialog box, specifically the 'Customize Ribbon' section. The 'Developer' tab is highlighted in the 'Main Tabs' list. A red box highlights the 'Developer' tab in the 'Main Tabs' list and the 'Developer' tab in the ribbon. The ribbon shows the 'Developer' tab selected, with various icons for 'Visual Basic', 'Macros', 'Record Macro', 'Use Relative References', 'Macro Security', 'Code', 'Add-ins', 'Excel Add-ins', 'COM Add-ins', 'Insert', 'Design Mode', 'Properties', 'View Code', 'Run Dialog', 'Source', 'Map Properties', 'Import', 'Expansion Packs', 'Export', and 'Refresh Data'.

Excel Options

General
Formulas
Data
Proofing
Save
Language
Accessibility
Advanced
Customize Ribbon
Quick Access Toolbar
Add-ins
Trust Center

Customize the Ribbon

Choose commands from: Popular Commands

Add or Remove Filters

- All Chart Types... [Create Chart]
- Borders
- Calculate Now
- Center
- Conditional Formatting
- Copy
- Custom Sort...
- Cut
- Decrease Font Size
- Delete Cells...
- Delete Sheet Columns
- Delete Sheet Rows
- Email
- Fill Color
- Font
- Font Color
- Font Size
- Format Cells
- Format Painter
- Freeze Panes
- Increase Font Size
- Insert Cells...
- Insert Function...
- Insert Picture
- Insert Sheet Columns

Add >>
<< Remove

Customize the Ribbon

Main Tabs

- Background Removal
- Home
- Insert
- Draw
- Page Layout
- Formulas
- Data
- Review
- View
- Developer**
- Add-ins
- Smart View
- Help
- Essbase
- Smart Query
- Oracle BI EE

New Tab
New Group
Rename...

Customizations: Reset
Import/Export

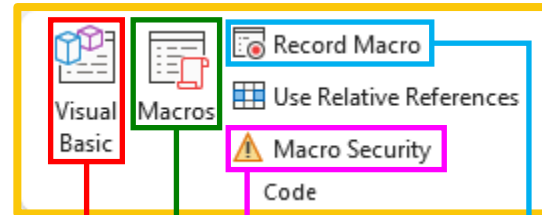
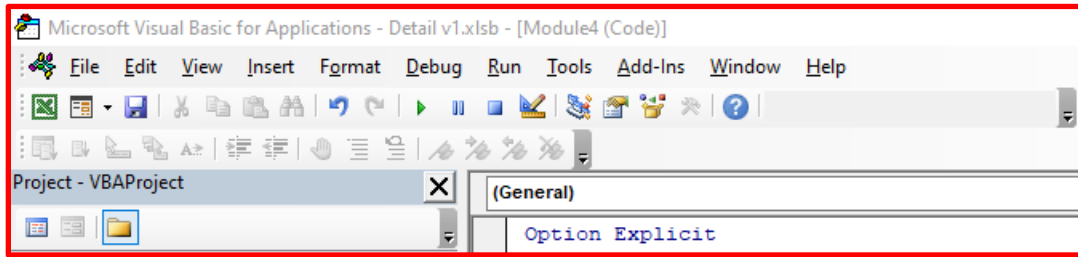
OK
Cancel

File Home Insert Page Layout Formulas Data Review View **Developer** Help Matt

Visual Basic
Macros
Record Macro
Use Relative References
Macro Security
Code
Add-ins
Excel Add-ins
COM Add-ins
Insert
Design Mode
Properties
View Code
Run Dialog
Source
Map Properties
Import
Expansion Packs
Export
Refresh Data
XML

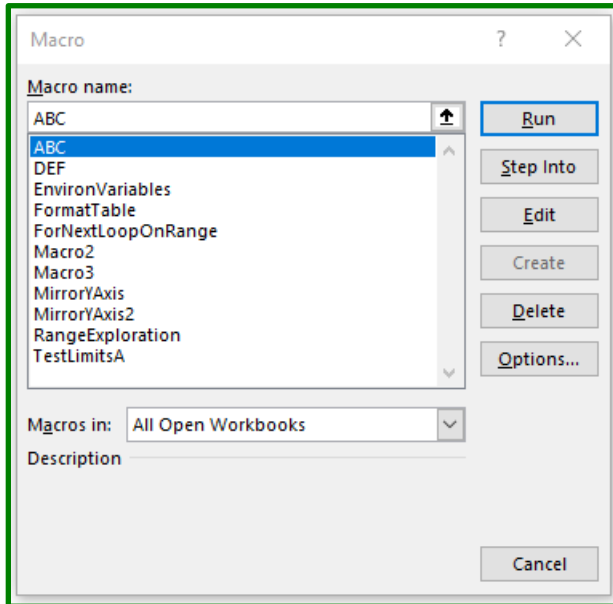
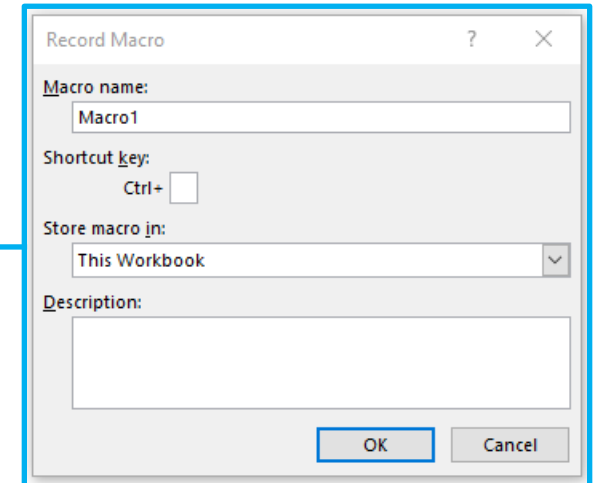
The Code group on the Developer tab has the core VBA tools: Visual Basic, Macros, Record Macro, and Macro Security

Developer tab, Code group



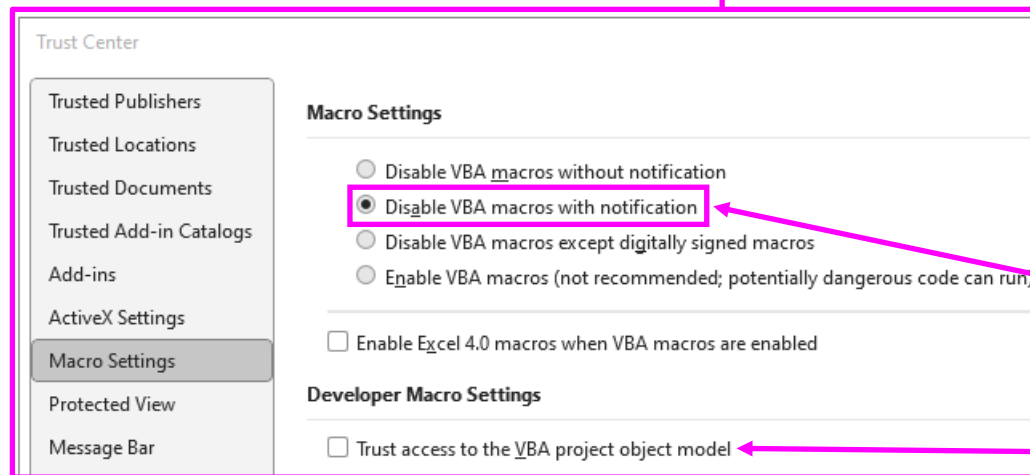
Record Macro

- Good for getting lines of code
- Don't use for production ready code



Macro

- Sub procedures marked as "Public" are visible



Macro Settings

- Macros can be potentially dangerous (this option allows you to enable or disable macros when a file opens)
- Programming VBA is possible

The Visual Basic Editor (VBE) is the coding environment and includes the tools to manage your program (“macro”)

VBE is where you write VBA code

The screenshot shows the Visual Basic Editor (VBE) interface with several components highlighted and labeled:

- File menu:** Located at the top left of the VBE window.
- Toolbars:** Located below the menu bar, containing various icons for file operations and development.
- Project Explorer:** Located on the left side, showing the project structure. It includes a list of project names (Excel files), project objects, and project files.
- Properties Window:** Located at the bottom left, showing properties for the selected object. It includes a list of properties and their values.
- Code Window:** Located in the center, showing the VBA code for the selected object. It includes a declaration drop-down menu, a code editor, and a declaration drop-down menu.
- Options dialog box:** Located at the top right, showing the Options dialog box with the Editor tab selected. It includes checkboxes for Auto Syntax Check and Require Variable Declaration.
- Object drop down (Ctrl+F2):** Located on the right side, showing a list of objects available in the project file.
- Code Window:** Located at the bottom right, showing the code for the selected object. It includes a declaration drop-down menu, a code editor, and a declaration drop-down menu.
- Immediate Window:** Located at the bottom center, showing the output of the Immediate window. It includes a text area for entering and executing code.
- Locals Window:** Located at the bottom center, showing the variables in the local file. It includes a table with columns for Expression, Value, Type, and Context.
- Watches Window:** Located at the bottom center, showing the variables and their values. It includes a table with columns for Expression, Value, Type, and Context.
- AutoSave:** Located at the bottom left, showing the AutoSave toggle switch.
- First Program dialog box:** Located at the bottom right, showing a message box with the text "Hello World!" and an OK button.